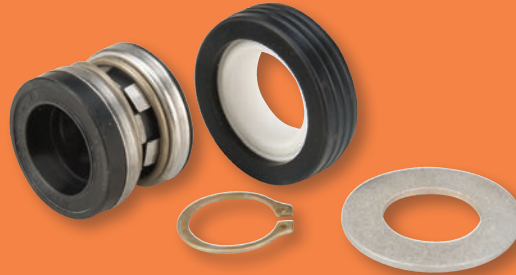


WHY GPI?

GPI OFFERS A FULL LINE OF PARTS AND ACCESSORIES IF YOU DAMAGE OR LOSE A PART.



ITEMS



Shaft Seal Kit #133503-1



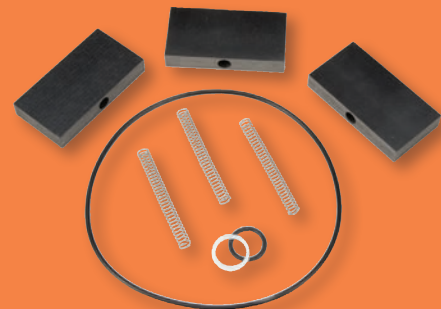
Overhaul Kit #110504-1

KITS

PART NO.	DESCRIPTION
110906-03	B100 Shaft Seal Conversion Kit for GPI Gear Pumps. Requires min. operating temp. of 40° for B100.
133503-02	B100 Shaft Seal Kit for GPI Vane Pumps. Requires min. operating temp. of 40° for B100
110504-1	Conversion & Overhaul Kit includes two gears, the drive key and replacement seals for the gear cover, motor shaft (use motor shaft seal to convert existing pump to B100 compatible), poppet, strainer and switch coverplate.
13750005	Overhaul Kit for EZ-8 includes motor shaft key, two gears and replacement seals
114505-2	Overhaul Kit for HP-100 Pump Hand includes piston ring, three seals, packing seals and liner.
123503-1	Overhaul Kit for RP-10 Rotary Hand Pump includes vanes, springs, O-rings and gasket
133504-1	Seal Kit includes four replacement seals
133503-1	Shaft Seal Kit includes retaining ring, shaft seal and spacer washer
133501-1	Vane Kit includes shaft key, eight 1.25 in. vanes and one seal
133502-1	Vane Kit includes shaft key, eight 2 in. vanes and one seal
HERBICIDE KIT	111502-2 Hose, Ball Valve Nozzle and Adjustable Suction Pipe for 2 in. bung



Herbicide Kit #111502-2



Overhaul Kit for RP-10 #123503-1