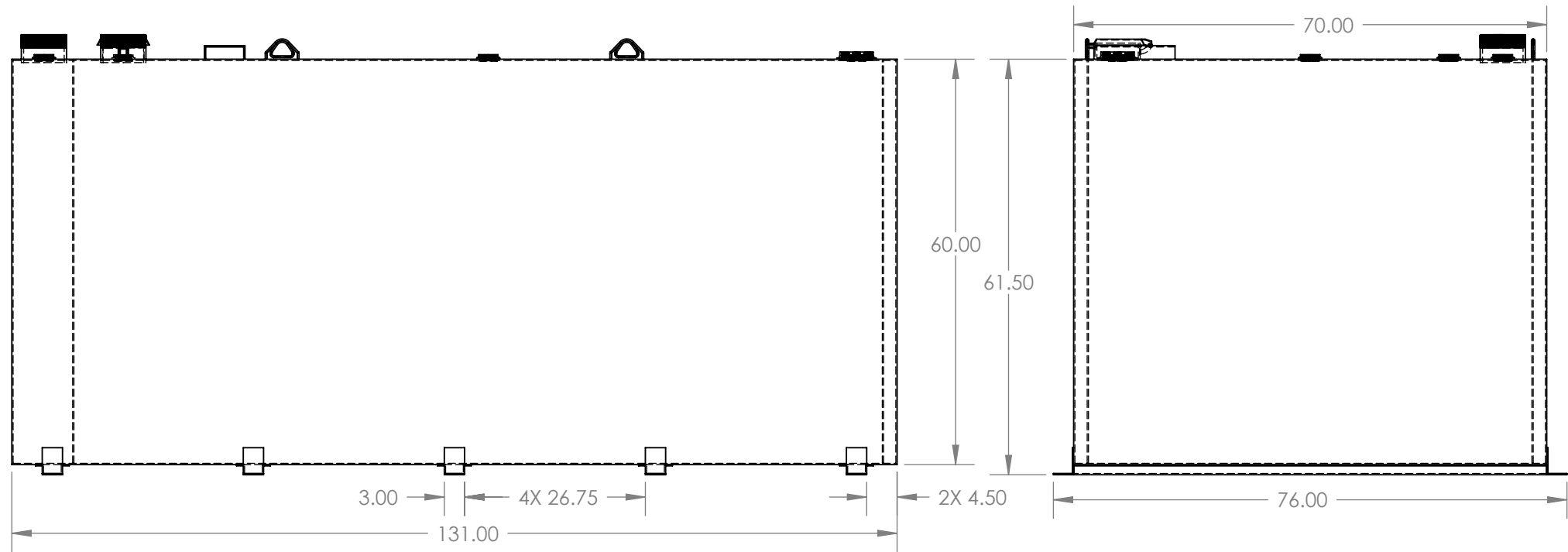
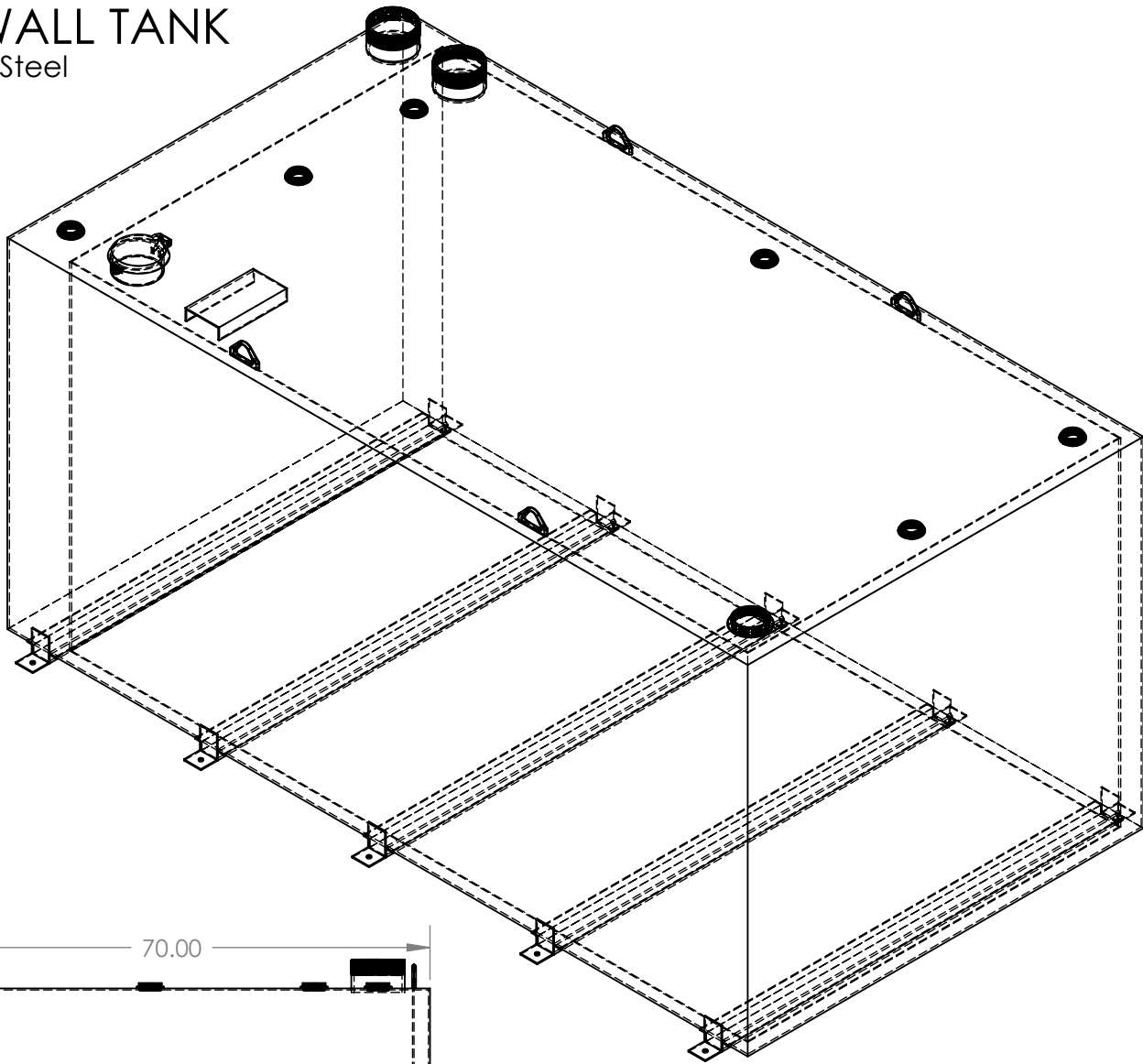
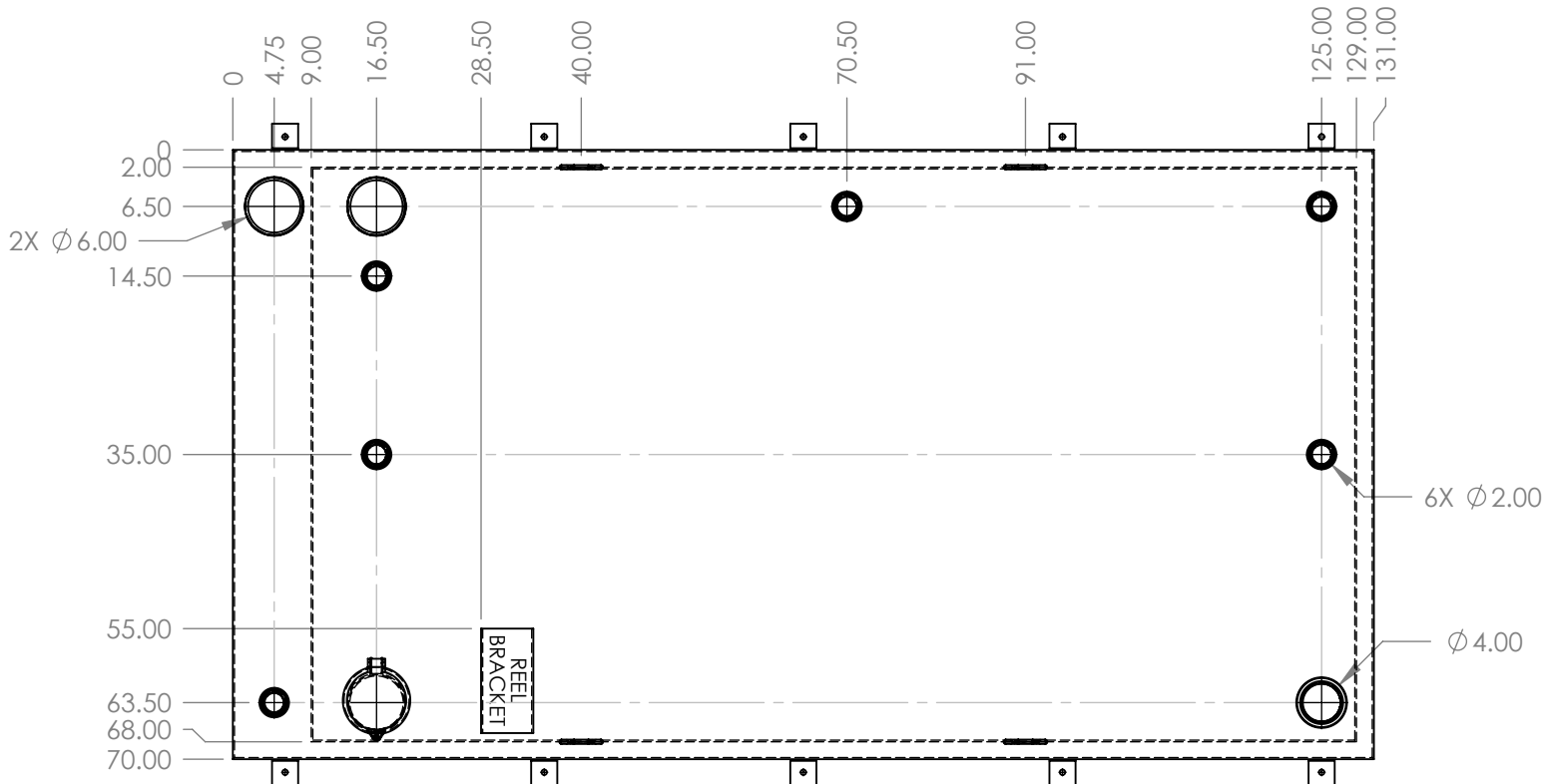


2000 GALLON DOUBLE WALL TANK
131"x70"x61.5"x7 Gauge Mild Steel



- (1) 6" Hatch in Primary Space
- (1) 6" MNPT in Primary Space
- (1) 4" FNPT in Primary Space
- (5) 2" FNPT in Primary Space
- (1) 6" MNPT in Annular Space
- (1) 2" FNPT in Annular Space
- (1) 6"x12" Reel Mount Bracket
- (4) Large Lifting Lug
- (10) 3" x 4" x 3" Angle Iron
- Tank Factory Tested at 3 PSI
- Powder Coat Finish
- 1 Year Warranty on Material and Workmanship
- *No provision for Lost Product or Business

PROPRIETARY AND CONFIDENTIAL
THE INFORMATION CONTAINED IN THIS
DRAWING IS THE SOLE PROPERTY OF
SUPERIOR STORAGE TANKS. ANY
REPRODUCTION IN PART OR AS A WHOLE
WITHOUT THE WRITTEN PERMISSION OF
SUPERIOR STORAGE TANKS IS
PROHIBITED.

SUPERIOR
STORAGE TANKS
14700 Industry Circle
La Mirada, CA 90638

GALLON	MATERIAL	SIZE	PART NO:
2000	3/16" Ga. Mild Steel	C	2000DW-FC
Label	A-36		
UL-142 Secondary Containment	UL-142, File # MH14783	Drawn By: D. Do	DATE: 4/24/2014
Unless Otherwise Noted	Description:	WEIGHT: 4000 lbs.	SCALE: 1:22 SHEET 1 OF 1