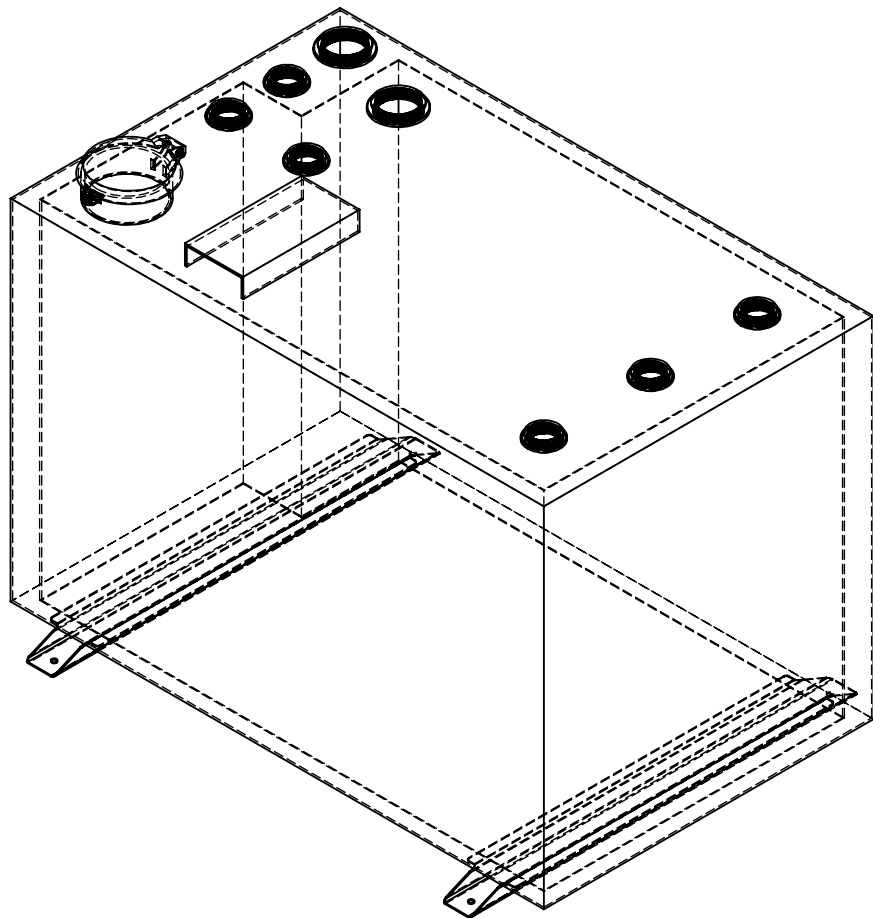
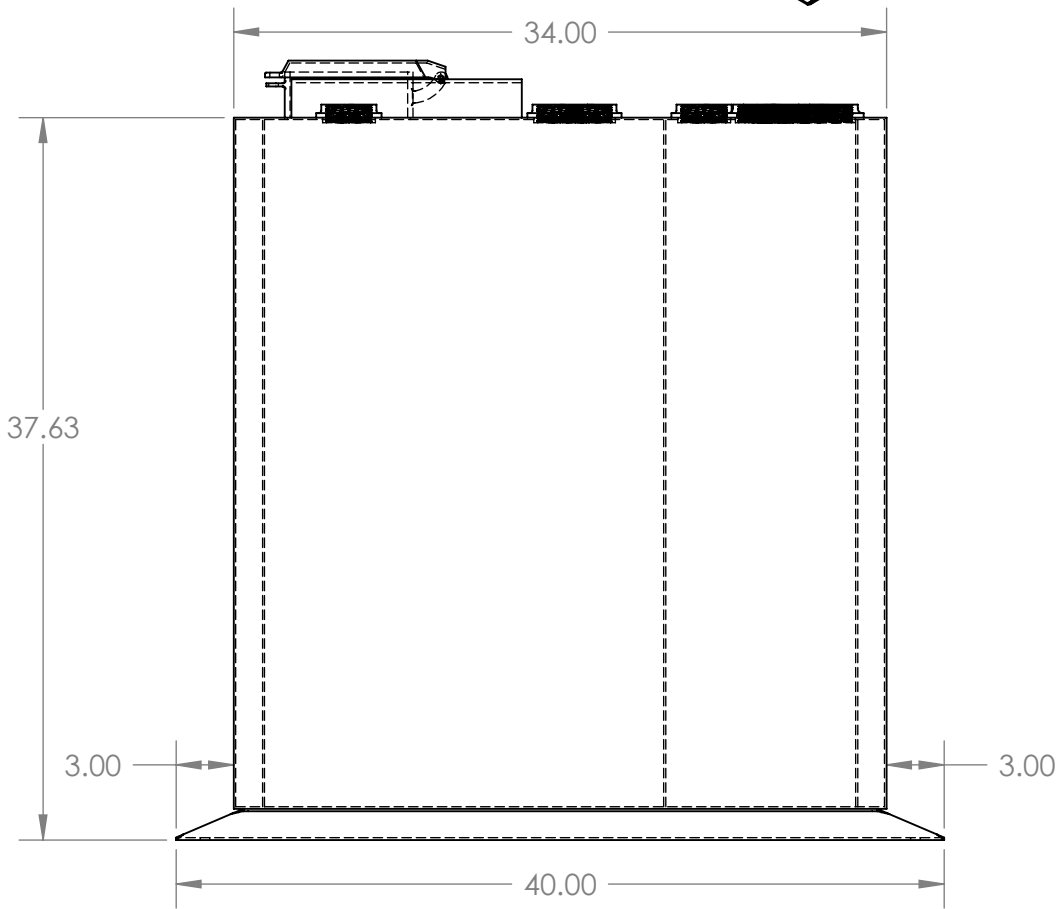


- (1) 6" Hatch in Primary Space
- (1) 3" FNPT in Primary Space
- (5) 2" FNPT in Primary Space
- (1) 3" FNPT in Annular Space
- (1) 2" FNPT in Annular Space
- (1) 6"x12" Reel Mount Bracket
- (2) Extended Tank Support
- Tank Factory Tested at 3 PSI
- Powder Coat Finish
- 1 Year Warranty on Material and Workmanship
- *No provision for Lost Product or Business

PROPRIETARY AND CONFIDENTIAL
THE INFORMATION CONTAINED IN THIS
DRAWING IS THE SOLE PROPERTY OF
SUPERIOR STORAGE TANKS. ANY
REPRODUCTION IN PART OR AS A WHOLE
WITHOUT THE WRITTEN PERMISSION OF
SUPERIOR STORAGE TANKS IS
PROHIBITED.

SUPERIOR
STORAGE TANKS
14700 Industry Circle
La Mirada, CA 90638



GALLON	MATERIAL	SIZE	DESCRIPTION:	240 GALLON DOUBLE WALL TANK			
235±1	12 Ga. Mild Steel	B	Label	A-36			
UL-142 Secondary Containment	Dwg By: D. Do	DATE: 9/4/2015	FILE NO: 240DW - ES	WEIGHT: ~675 lbs.	SCALE: 1:10	SHEET 1 OF 1	