

ADAPTORS

PETROLEUM

FILTER TECHNOLOGY FOR PETROLEUM PRODUCTS

3/4" NPT Inlet/Outlet Ports

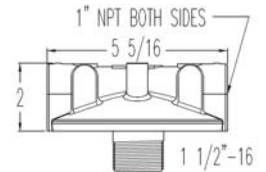
Part No.	Adaptor	Description	Dimensions
50003		Material: Cast-iron adaptor Used on: 200E, 250E, 260, & 300 series Inlet/Outlet ports: 3/4" NPT Nose outside thread: 1"-12 UNF	
50181		Material: Aluminum adaptor Used on: 200E, 250E, 260, & 300 series Inlet/Outlet ports: 3/4" NPT Nose outside thread: 1"-12 UNF	

1" NPT Inlet/Outlet Ports

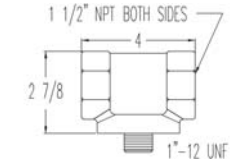
Part No.	Adaptor	Description	Dimensions
50002		Material: Cast-iron adaptor Used on: 200E, 250E, 260, & 300 series Inlet/Outlet ports: 1" NPT Nose outside thread: 1"-12 UNF	
50004		Material: Cast-iron adaptor Used on: 200AE & 250AE series Inlet/Outlet ports: 1" NPT Nose outside thread: 1 3/8"-12 UNF	
50026		Material: Aluminum adaptor-gauge ports Used on: 800 series Inlet/Outlet ports: 1" NPT Nose outside thread: 1 1/2"-16 UNF	
50032		Material: Aluminum adaptor Used on: 400, 450, & 475 series Inlet/Outlet ports: 1" NPT Nose outside thread: 1 1/2"-16 UNF	

Part No.**Adaptor****Description****Dimensions****50109**

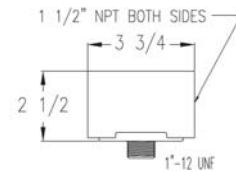
Material: Aluminum adaptor
 Used on: 800 series
 Inlet/Outlet ports: 1" NPT
 Nose outside thread: 1 1/2"-16 UNF

**1 1/2" NPT Inlet/Outlet Ports****Part No.****Adaptor****Description****Dimensions****50015**

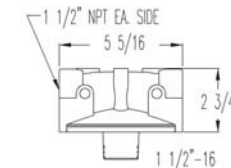
Material: Cast-iron adaptor
 Used on: 200E, 250E, 260, & 300 series
 Inlet/Outlet ports: 1 1/2" NPT
 Nose outside thread: 1"-12 UNF

**50005**

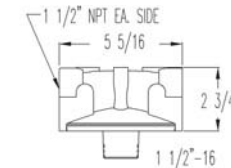
Material: Aluminum adaptor
 Used on: 200E, 250E, 260, & 300 series
 Inlet/Outlet ports: 1 1/2" NPT
 Nose outside thread: 1"-12 UNF

**50027**

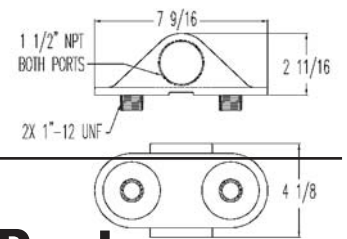
Material: Aluminum adaptor-gauge ports
 Used on: 800 series
 Inlet/Outlet ports: 1 1/2" NPT
 Nose outside thread: 1 1/2"-16 UNF

**50163**

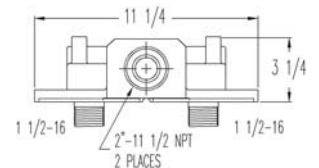
Material: Aluminum adaptor
 Used on: 800 series
 Inlet/Outlet ports: 1 1/2" NPT
 Nose outside thread: 1 1/2"-16 UNF

**50006**

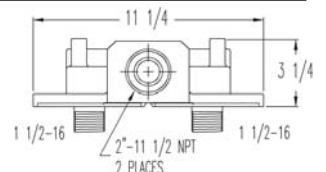
Material: Aluminum dual adaptor
 Used on: 200E, 250E, 260, & 300 series
 Inlet/Outlet ports: 1 1/2" NPT
 Nose outside thread: 1"-12 UNF

**2" NPT Inlet/Outlet Ports****Part No.****Adaptor****Description****Dimensions****50011**

Material: Aluminum dual adaptor
 Used on: 800 series
 Inlet/Outlet ports: 2" NPT
 Nose outside thread: 1 1/2"-16 UNF

**50028**

Material: Aluminum dual adaptor-gauge ports
 Used on: 800 series
 Inlet/Outlet ports: 2" NPT
 Nose outside thread: 1 1/2"-16 UNF



Adaptors for High Bio-Content

Part No.	Adaptor	Description	Dimensions
50017N		Material: Nickel-plated adaptor Used on: Part #70025 Inlet/Outlet ports: 3/4" NPT Nose outside thread: 1"-12 UNF	
50016N		Material: Nickel-plated adaptor Used on: Part #70025 Inlet/Outlet ports: 1" NPT Nose outside thread: 1"-12 UNF	
50032N		Material: Nickel-plated adaptor Used on: Model #70039 Inlet/Outlet ports: 1" NPT Nose outside thread: 1 1/2"-16 UNF	
50018N		Material: Nickel-plated dual adaptor Used on: Part #70025 Inlet/Outlet ports: 1 1/2" NPT Nose outside thread: 1"-12 UNF	
50163N		Material: Nickel-plated adaptor Used on: Part #70041 Inlet/Outlet ports: 1 1/2" NPT Nose outside thread: 1 1/2"-16 UNF	
50011N		Material: Nickel-plated dual adaptor Used on: Part #70041 Inlet/Outlet ports: 2" NPT Nose outside thread: 1 1/2"-16 UNF	

Adaptor Cap for 1"-12 UNF Thread

Part No.	Adaptor	Description	Dimensions
50001		Material: Cast-iron adaptor Used on: 200E, 250E, 260 & 300 series Nose outside thread: 1"-12 UNF	