

Self Priming Centrifugal Pump



Gasoline Engine Driven
Model 82D1-EX13-X

Size 2" x 2"



Total Head		Capacity Of Pump In U.S. Gallons Per Minute (GPM) At Continuous Performance			
P.S.I.	Feet				
37.5	108	30	30	30	30
34.7	100	49	59	60	60
31.2	90	65	82	88	88
27.7	80	75	99	107	108
24.3	70	78	106	123	126
20.8	60	79	111	132	139
17.3	50	80	112	135	151
13.9	40	81	113	136	154
10.4	30	82	114	137	156
Suction Lift		25'	20'	15'	10'



PUMP SPECIFICATIONS

Size: 2" x 2" (51 mm x 51 mm) NPT - Female.

Casing: Aluminum Alloy 356-T6 w/Gray Iron 30 Cutwater Insert. Maximum Operating Pressure 59 psi (407 kPa).*

Semi-Open Type, Three Vane Impeller: Aluminum Alloy 356-T6. Handles 5/8" (15,8 mm) Diameter Spherical Solids.

Replaceable Wear Plate: Carbon Steel ASTM A36.

Intermediate Bracket: Gray Iron 30.

Seal: Type 21, Mechanical, Self-Lubricated. Carbon Rotating Face. Ni-Resist Stationary Face. Fluorocarbon Elastomers (DuPont Viton® or Equivalent). Stainless Steel 18-8 Cage and Spring. Maximum Temperature of Liquid Pumped, 160°F (71°C).*

Shaft Sleeve: Stainless Steel 304.

Flap Valve: Nitrile Nylon Coated Fabric; Gray Iron 30.

Flange: Gray Iron 30.

Gaskets: Cork w/Nitrile Binder NC710.

Hardware: Standard Plated Steel.

Standard Equipment: Roll Cage w/Rubber Feet.
90° Discharge Elbow.

Optional Equipment: Wheel Kit w/Semi-Pneumatic Tires.
Strainer.

**Consult Factory for Applications Exceeding Maximum Pressure and/or Temperature Indicated.*

WARNING!

This unit is designed to handle volatile, flammable liquids. To reduce the risk of fire or explosion, do not operate near open flames, sparks, cigarettes or any other ignition source. Do not operate the unit in an explosive atmosphere or unventilated area. Connect the attached ground cable to the nearest grounding point on the tank being filled. Shut off the engine and allow it to completely cool before refueling.

ENGINE SPECIFICATIONS

Model: Subaru Robin EX13.

Type: Single Cylinder, Four Cycle, Air Cooled, Gasoline Engine.

Displacement: 7.69 Cu. In. (126 cc).

Lubrication: Splash System.

Air Cleaner: Dual Element, Semi Dry.

Fuel Tank: 2.85 U.S. Qts. (2,7 Liters).

Full Load Operating Time: 1.9 Hrs.

Starter: Rope Rewind.

Standard Equipment: Manual Start-Run Choke Control, Manual Throttle Control with Top Speed Limit. Spark Arresting Muffler and Heat Shield. Shielded Ignition. Grounding Wire.



GORMAN-RUPP PUMPS

www.grpumps.com

Specifications Subject to Change Without Notice

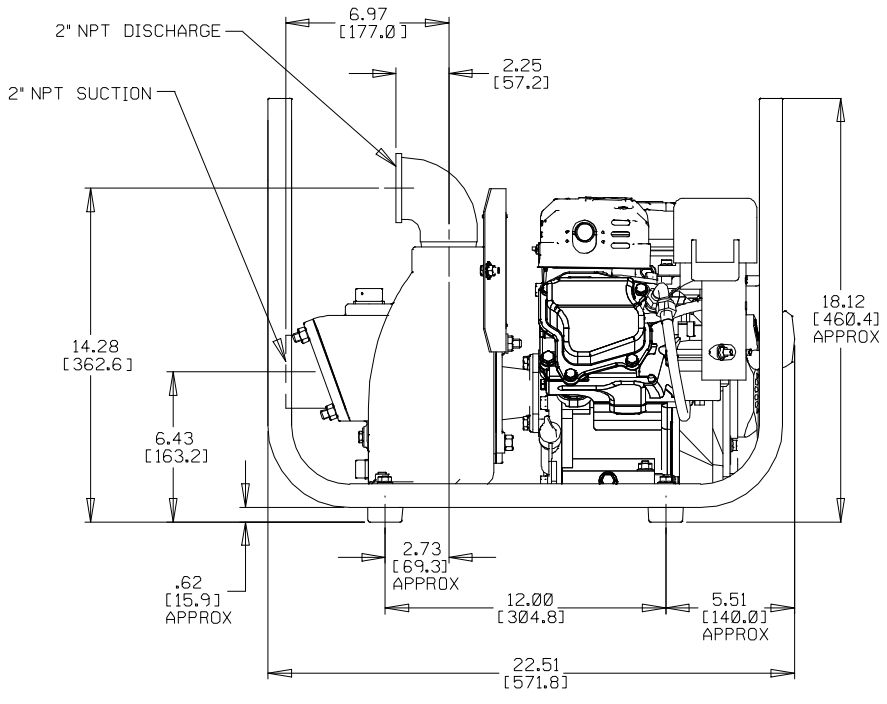
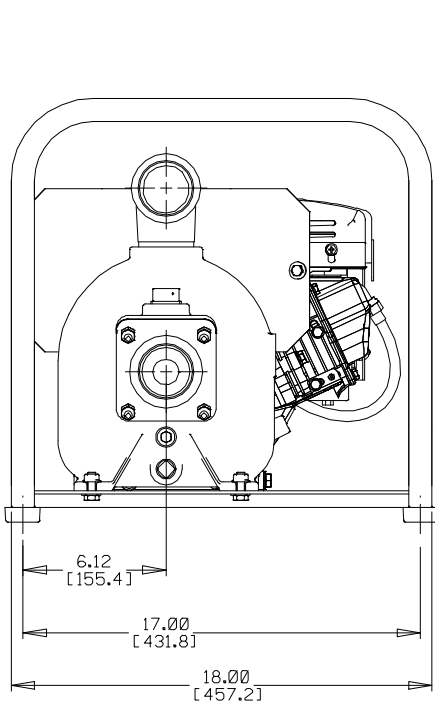
Printed in U.S.A.

Specification Data

SECTION 20, PAGE 180

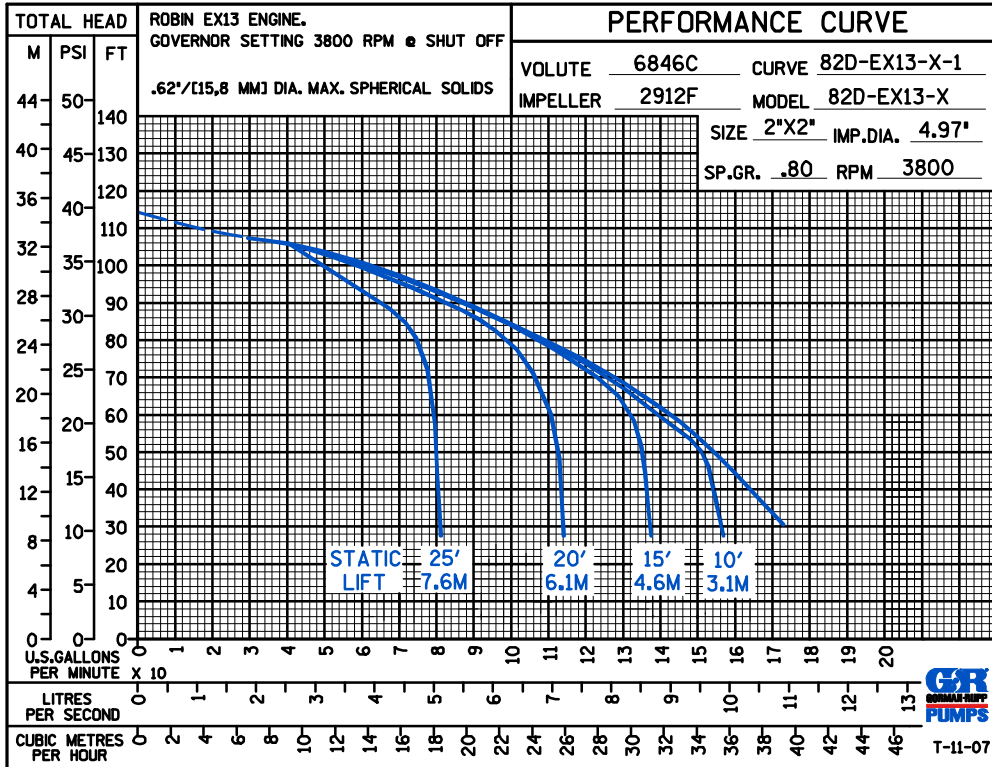
APPROXIMATE DIMENSIONS and WEIGHTS

	SKID BASE	2-WHEEL
NET WEIGHT:	73 LBS. (33 KG.)	95 LBS. (43 KG.)
SHIPPING WEIGHT:	76.5 LBS. (35 KG.)	100 LBS. (45 KG.)
EXPORT CRATE SIZE:	4.0 CU. FT. (0,11 CU. M.)	7.0 CU. FT. (0,20 CU. M.)



POWERED BY: ROBIN EX13 SPARK ARREST ENGINE

DIMENSIONS:
INCHES
[MILLIMETERS]



GORMAN-RUPP PUMPS

www.grpumps.com

Specifications Subject to Change Without Notice

Printed in U.S.A.