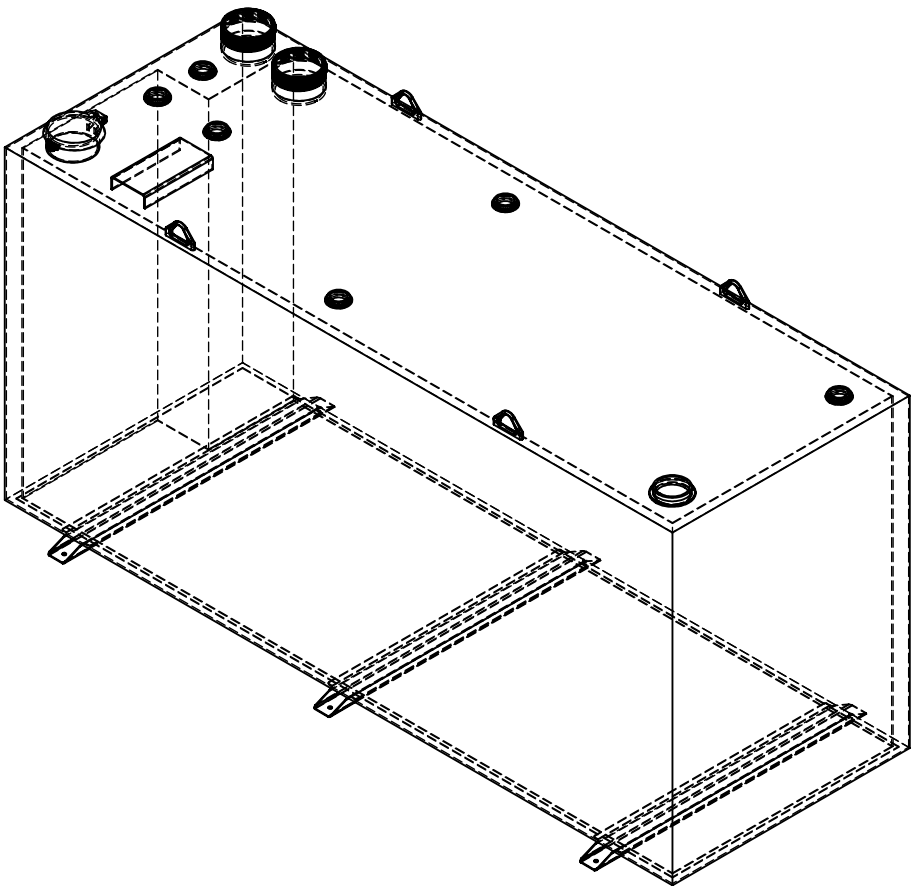
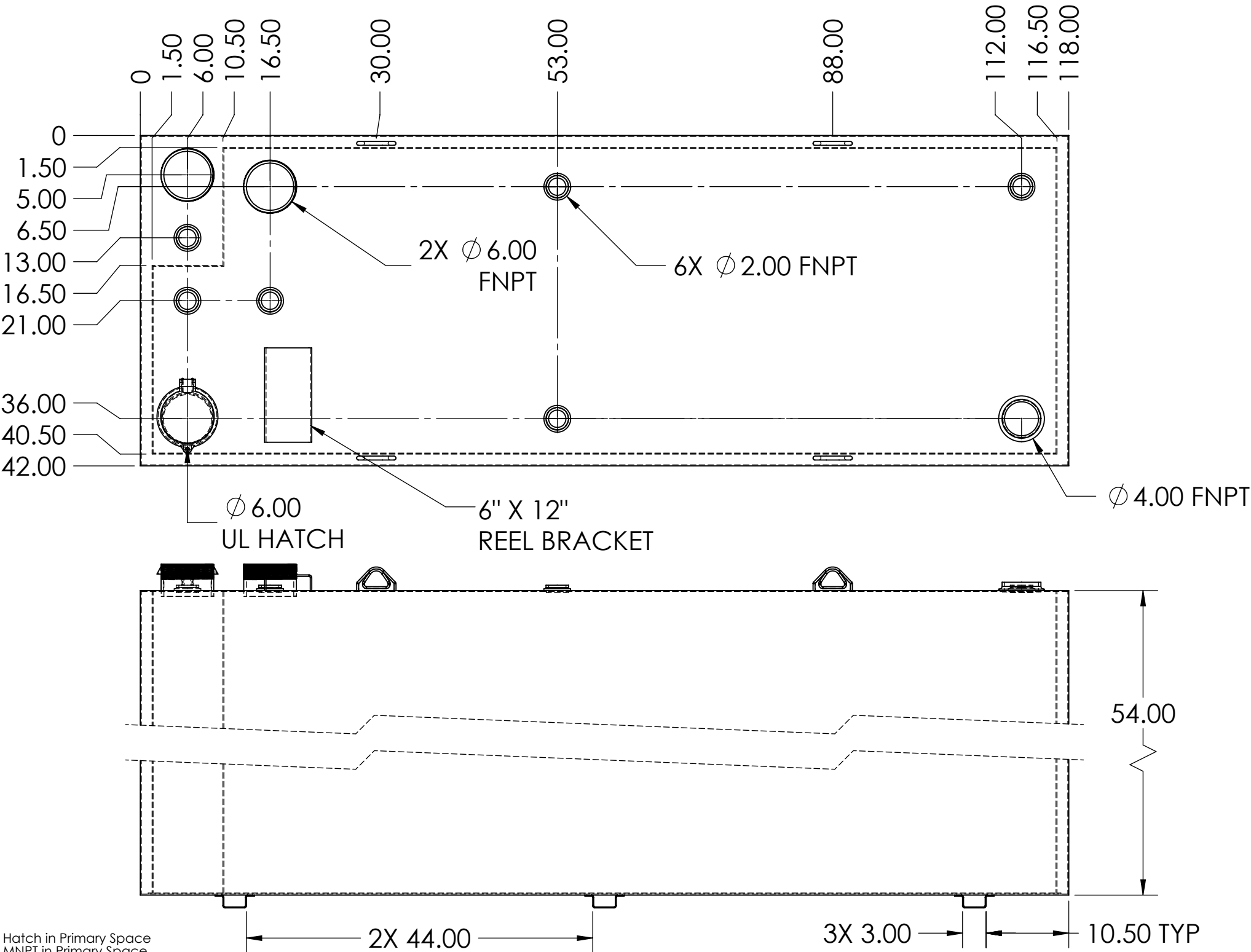


1000 GALLON DOUBLE WALL TANK [118 X 42 X 54]



(1) 6" Hatch in Primary Space
(1) 6" MNPT in Primary Space
(1) 4" FNPT in Primary Space
(5) 2" FNPT in Primary Space
(1) 6" MNPT in Annular Space
(1) 2" FNPT in Annular Space
(4) Large Lifting Lug
(1) 6" x 12" Reel Bracket
(3) Extended Tank Support
Tank Factory Tested at 3 PSI
Powder Coat Finish
1 Year Warranty on Material
and Workmanship
*No provision for Lost Product or Business

PROPRIETARY AND CONFIDENTIAL
THE INFORMATION CONTAINED IN THIS
DRAWING IS THE SOLE PROPERTY OF
SUPERIOR STORAGE TANKS. ANY
REPRODUCTION IN PART OR AS A WHOLE
WITHOUT THE WRITTEN PERMISSION OF
SUPERIOR STORAGE TANKS IS
PROHIBITED.

SUPERIOR
STORAGE TANKS
14700 Industry Circle
La Mirada, CA 90638

GALLON	MATERIAL	SIZE	DESCRIPTION:
1000	10 Ga. Mild Steel A-36	B	1000 GALLON DOUBLE WALL TANK [118 X 42 X 54]
UL-142 Secondary Containment	UL-142, File # MH14783 Dwg By: J. BOYD	FILE NO: 1000DW- ES - (6X12) DATE: 11/19/2018	WEIGHT: 1777.86 lbs. SCALE: 1:15 SHEET 1 OF 1